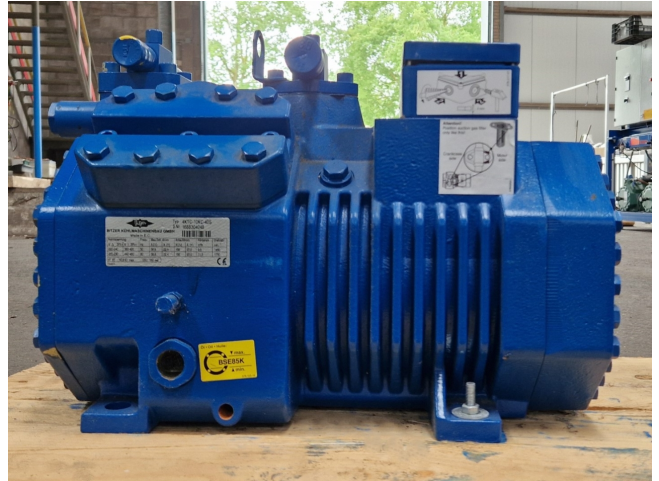


Bitzer 4KTC-10KC-40S

Specifications

Marka	Bitzer
Typ	4KTC-10KC-40S
Czynnik chłodzący	CO2
kW at 0°C/+40°C	34,0
kW at -5°C/+40°C	28,4
kW at -10°C/+40°C	23,4
kW at -20°C/+40°C	15,2
Okno widokowe	✓
m ³ / h	50 Hz - 9,6 m ³ /h / 60 Hz - 11,5 m ³ /h
Uwagi	Y.o.b. 2015
Waga kg.	108 kg
Rozmiary	520x300x360 mm (LxWxH)
Stock	1



Description

Used Bitzer 4KTC-10KC-40S

Used Bitzer 4KTC-10K-40S semi-hermetic reciprocating compressor with a sight glass on CO2 (R744). The compressor has a displacement of 9,6 m³/h at 50 Hz and 11,5 m³/h at 60 Hz. Please notice: capacity based on a pressure of 90 bar.

*Why choose for HOSBV? Were not only the largest used refrigeration specialist in Europe, but also, we deliver all equipment including an extensive test, warranty and industrial cleaning. *If requested we are happy to arrange your shipment.

